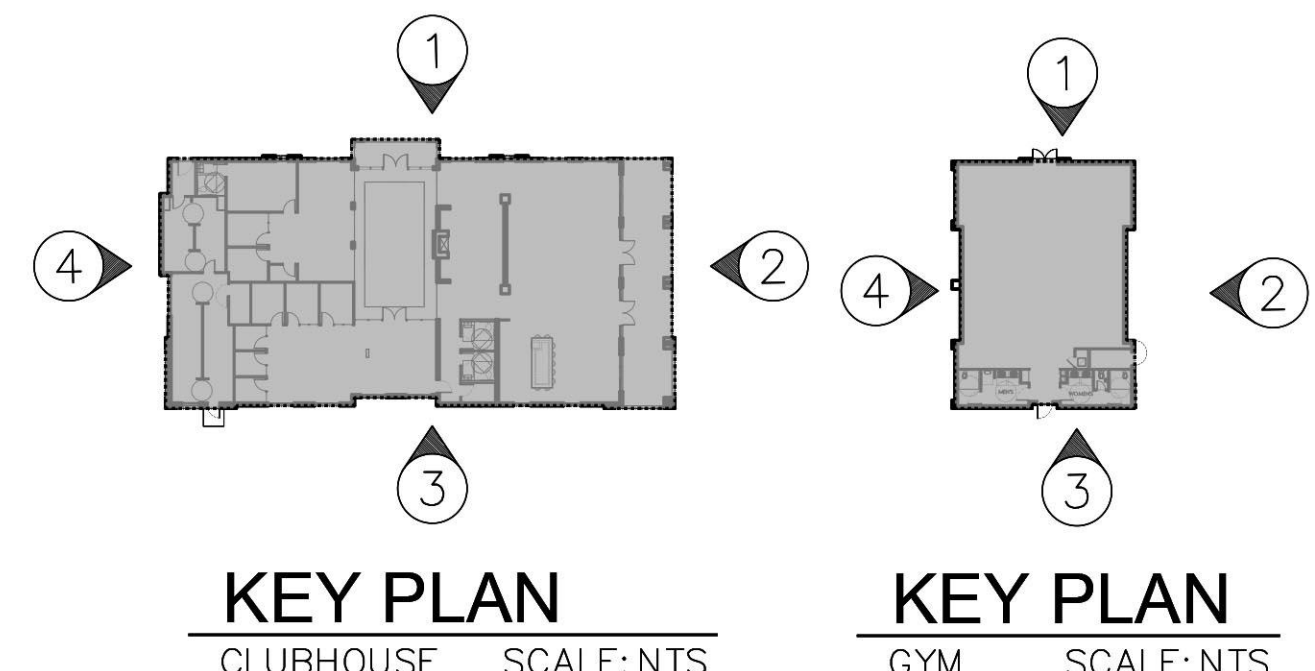


COLOR SCHEME KEY

- 1 MAIN SW 7757 HIGH REFLECTIVE WHITE
- 2 TRIMS SW 7631 CITY LOFT
- 3 DETAIL COLOR SW 7014 EIDER WHITE
- 4 SHUTTERS SW 6766 MARINER
- 5 AWNING/BRACKETS SW 9183 DARK CLOVE
- 6 RAILINGS/WINDOWS/DOOR FRAMES SW 7048 URBANE BRONZE
- 7 ROOFS BARREL TILES REDDISH ORANGE



CLUBHOUSE/GYM ELEVATIONS
SCALE: 1/8"=1'-0"

DRC

FOR: MORGUARD LOCATED AT: POMPANO BEACH, FLORIDA

JOSE I. SAUMELL ARCHITECTS, INC. 8950 SW 74th COURT MIAMI, FLORIDA 33156 (305) 273-9911

MSA ARCHITECTS, INC. AAC000895

ARCHITECTURE & PLANNING

DRAWN CONTRACT DATE 10/12/22 SCALE AS SHOWN JOB NO. 2181.PRJ SHEET TITLE: CLUBHOUSE/GYM ELEVATIONS SHEET NUMBER: CH-3.1

ARCHITECT'S BUILDING CODE STATEMENT/ TO THE BEST OF THE ARCHITECT'S KNOWLEDGE THE PLANS AND SPECIFICATIONS COMPLY WITH THE FLORIDA BUILDING CODE SEVENTH EDITION (2020) AND THE APPLICABLE FIRE SAFETY STANDARDS AS DETERMINED BY THE LOCAL AUTHORITY AND CHAPTER 6100, FLORIDA STATUTES. THE ARCHITECT'S LIABILITY IS LIMITED TO THE DESIGN AND DETAIL DRAWINGS FOR THIS BUILDING AND/OR OVERALL PROJECT ARE THE LEGAL PROPERTY OF AND ALL RIGHTS ARE RESERVED BY THE ARCHITECT. THEIR USE FOR REPRODUCTION, CONSTRUCTION, OR DISTRIBUTION IS PROHIBITED UNLESS AUTHORIZED IN WRITING BY THE ARCHITECT.